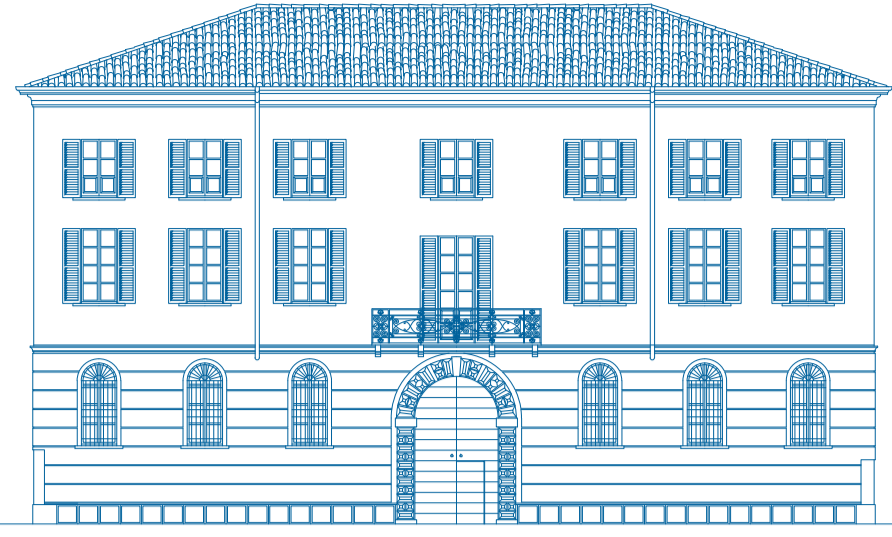


COMUNE DI CREMA

PROVINCIA DI CREMONA



PIANO DI RECUPERO  
PALAZZO FRERI CAPPELLAZZI  
Via Giacomo Matteotti, 40/42 - Crema

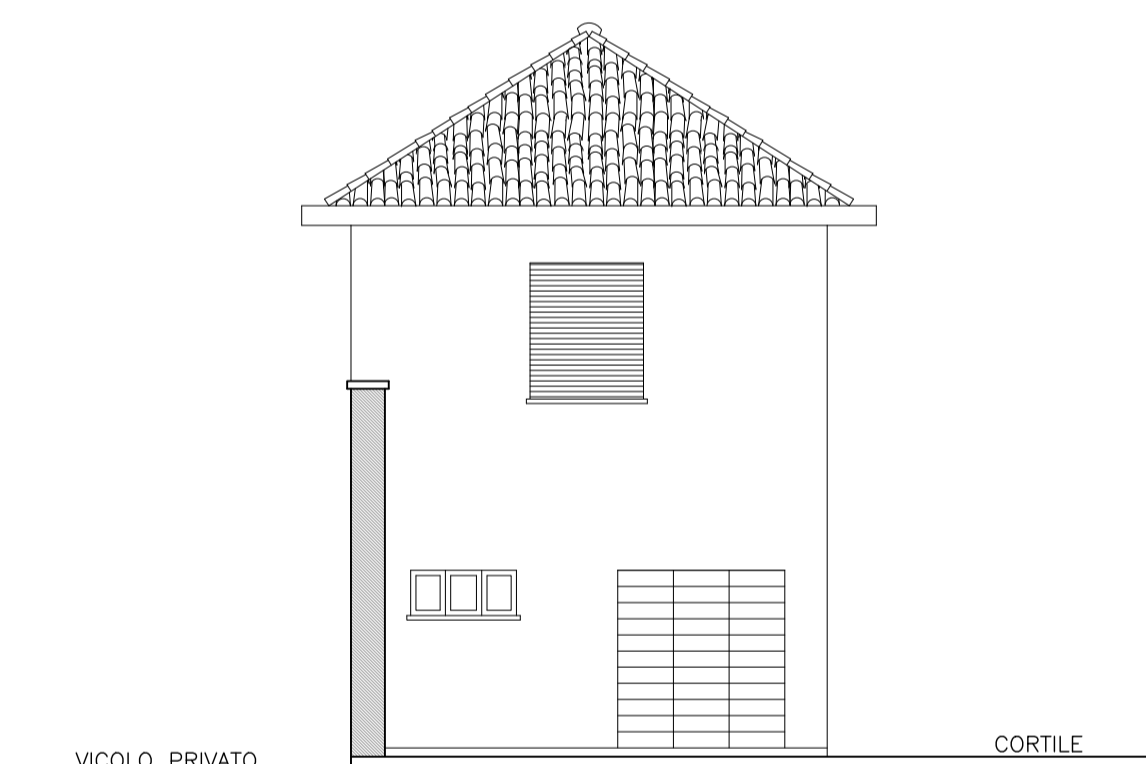
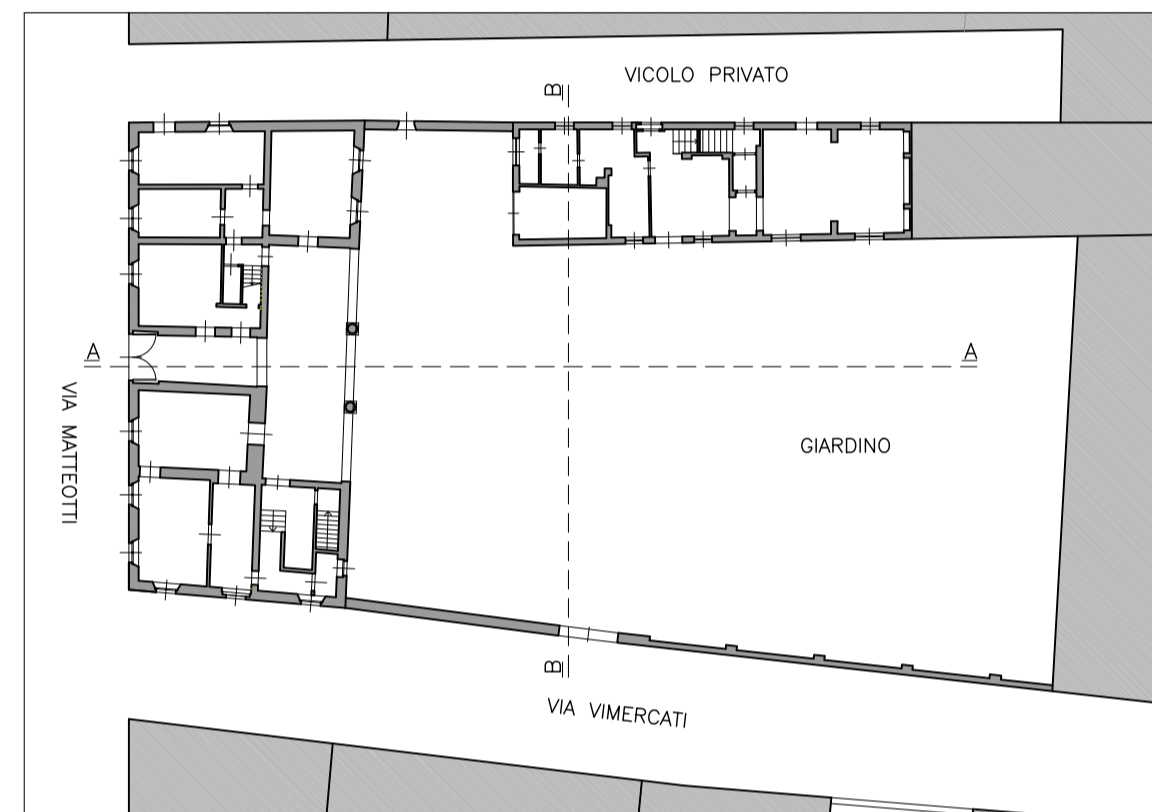
3B - STATO ATTUALE

PROSPETTI E SEZIONI

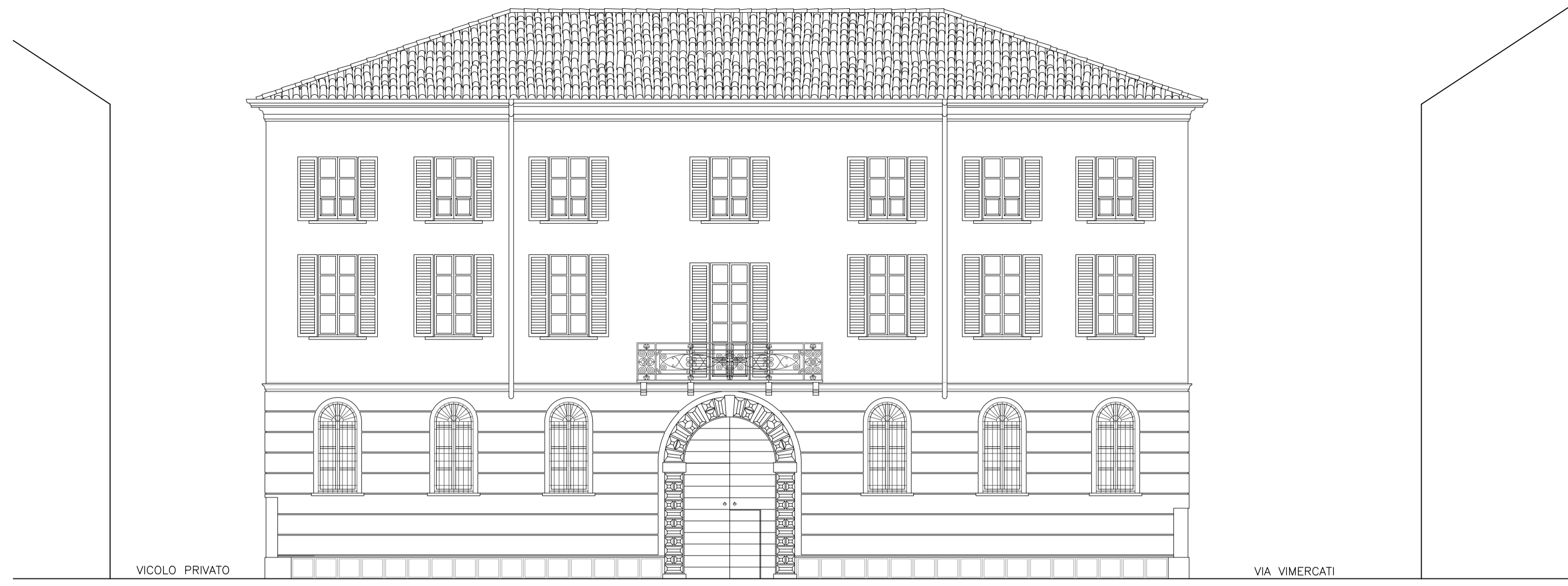
SCALA 1:100

IL PROGETTISTA  
Architettura  
Manoel Pisto  
110 digitalmente

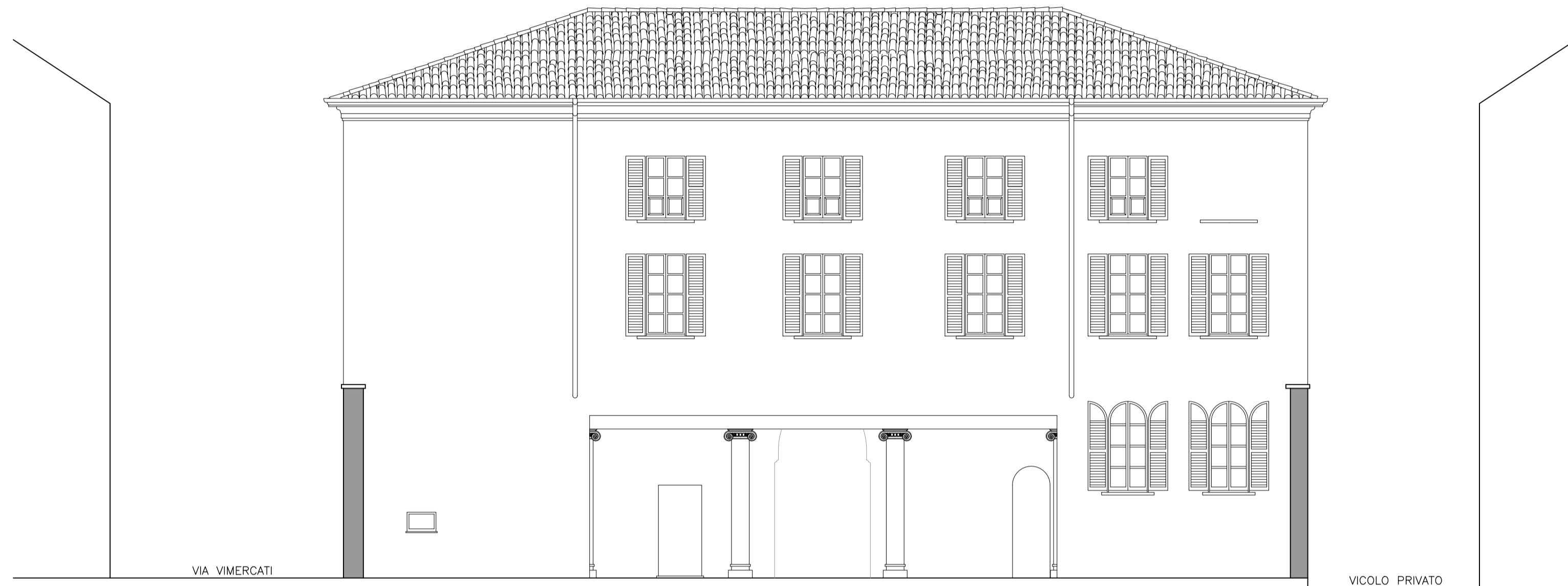
LA PROPRIETA'  
Lavora in  
110 digitalmente



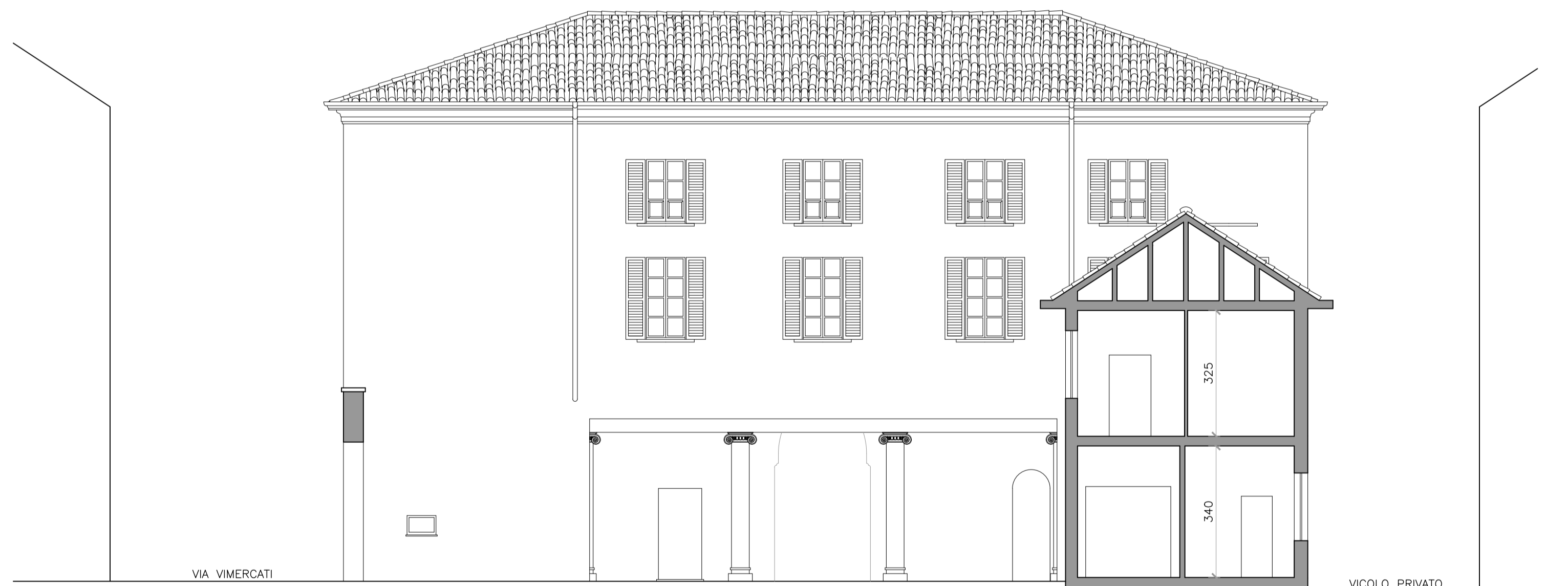
PROSPETTO PALAZZINA



PROSPETTO VIA MATTEOTTI



PROSPETTO DAL CORTILE INTERNO



PROSPETTO DAL CORTILE INTERNO



SEZIONE AA

EDIFICIO  
ESISTENTE