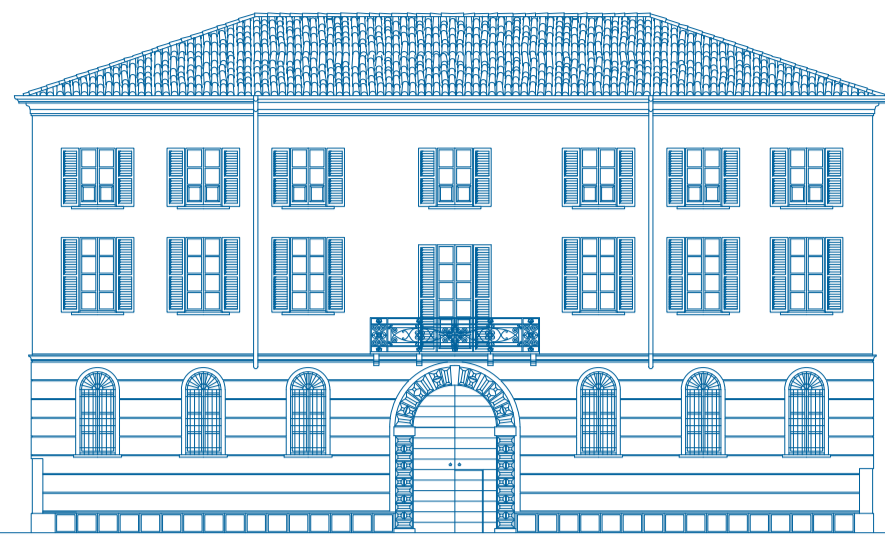


COMUNE DI CREMA

PROVINCIA DI CREMONA



PIANO DI RECUPERO
PALAZZO FRERI CAPPELLAZZI
Via Giacomo Matteotti, 40/42 - Crema

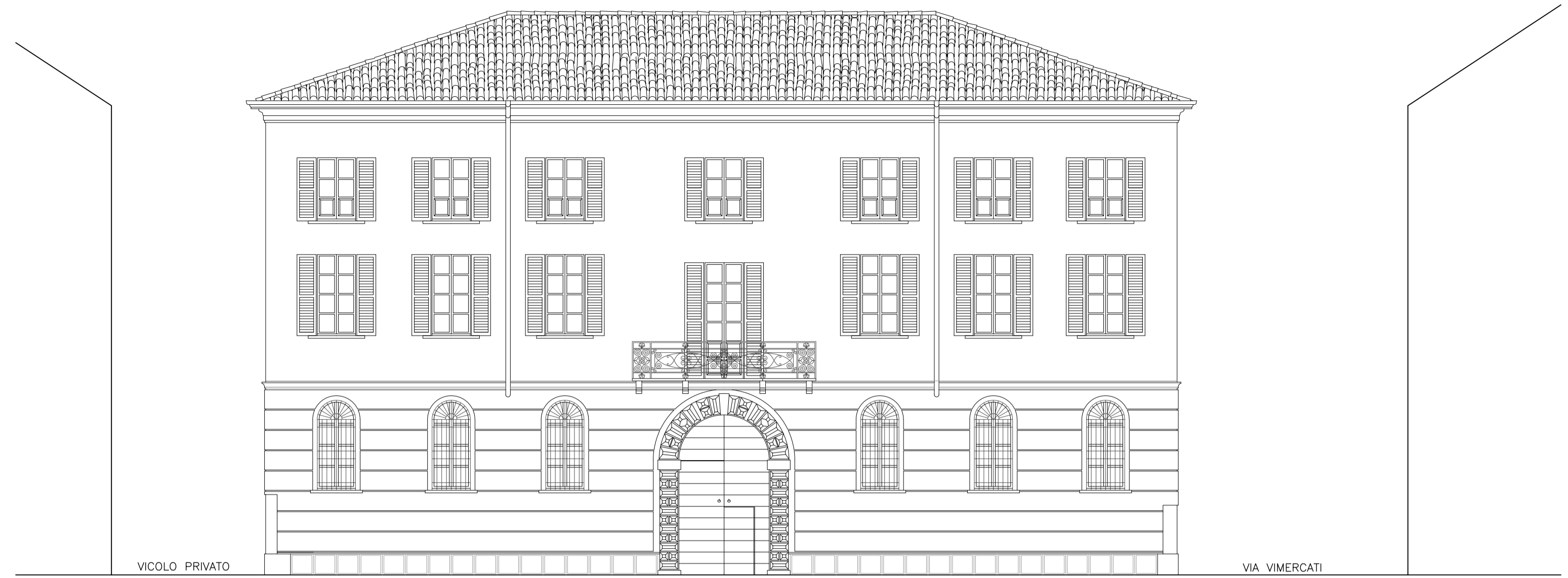
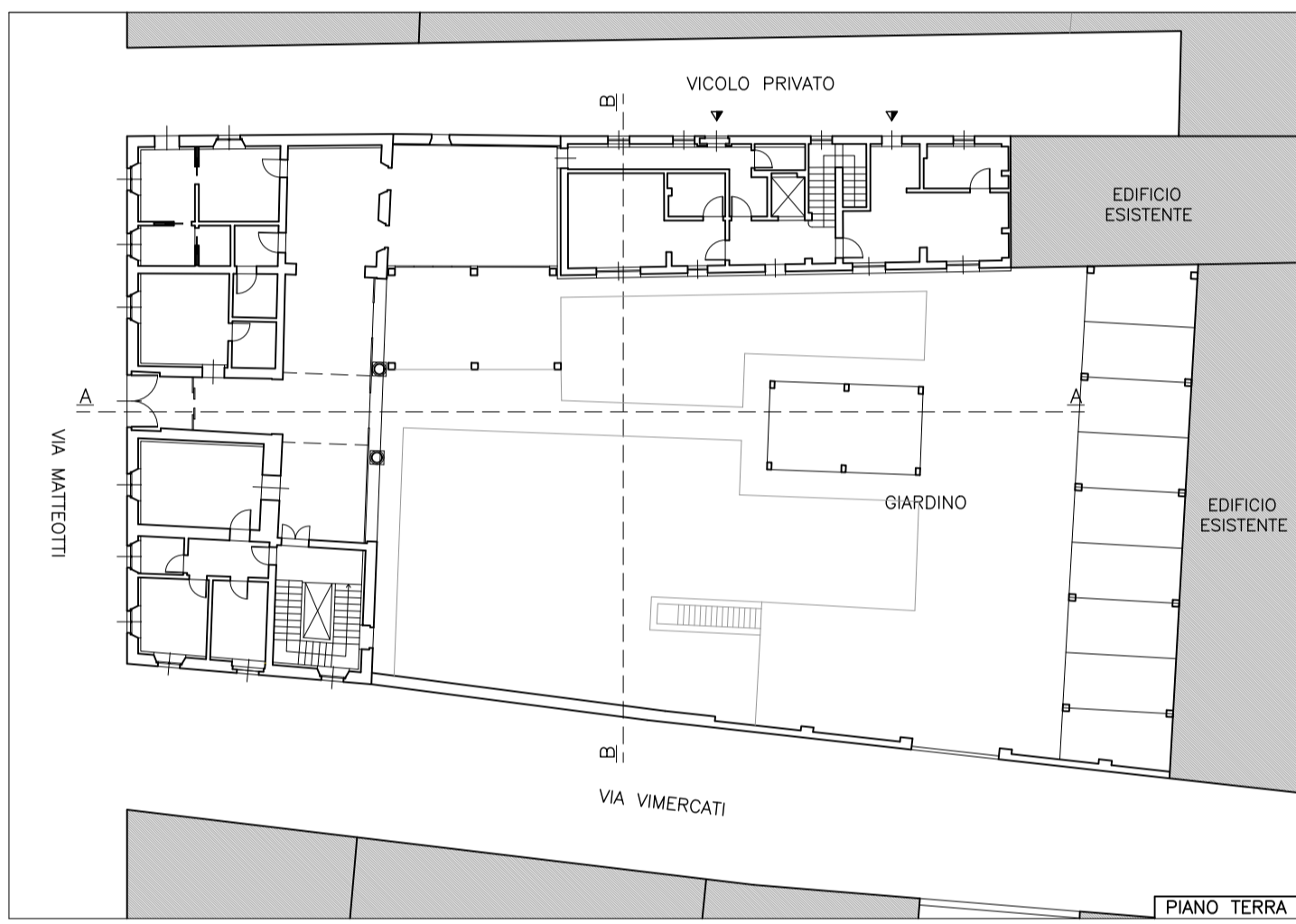
4B - PROGETTO - schema progettuali

PROSPETTI E SEZIONI

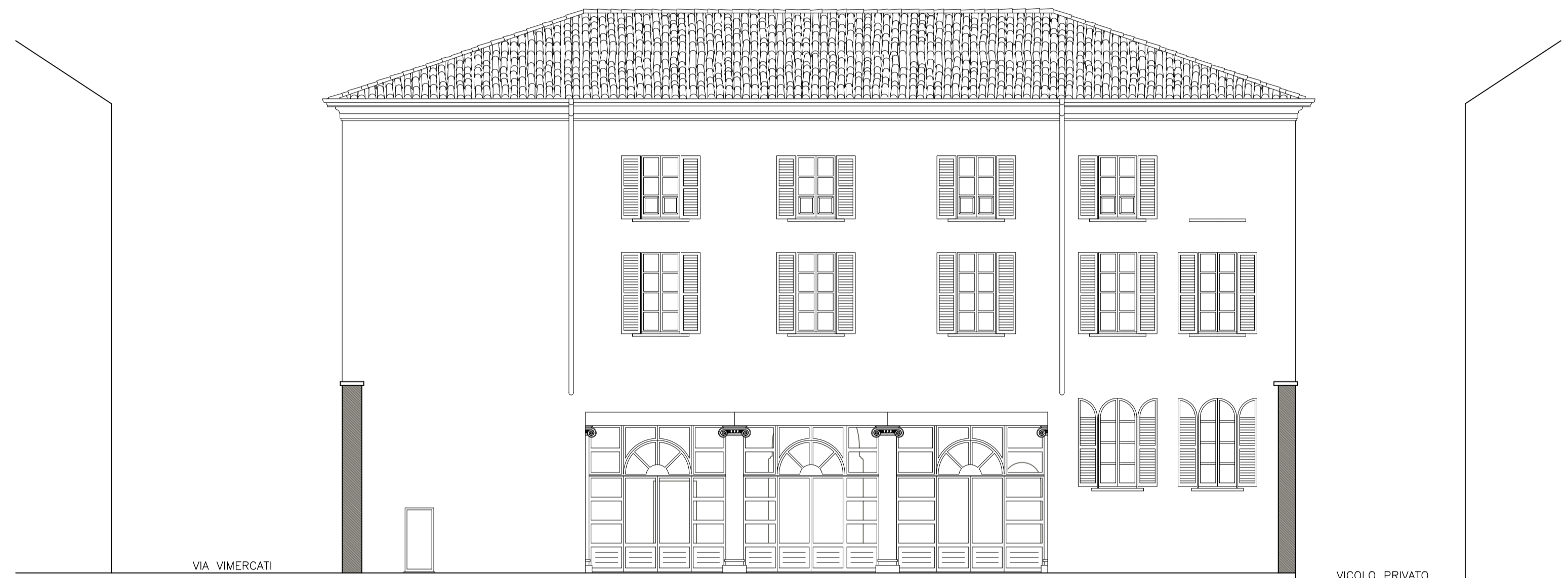
SCALA 1:100

IL PROGETTISTA
Architetto
Manoel Paoz
f.to digitalmente

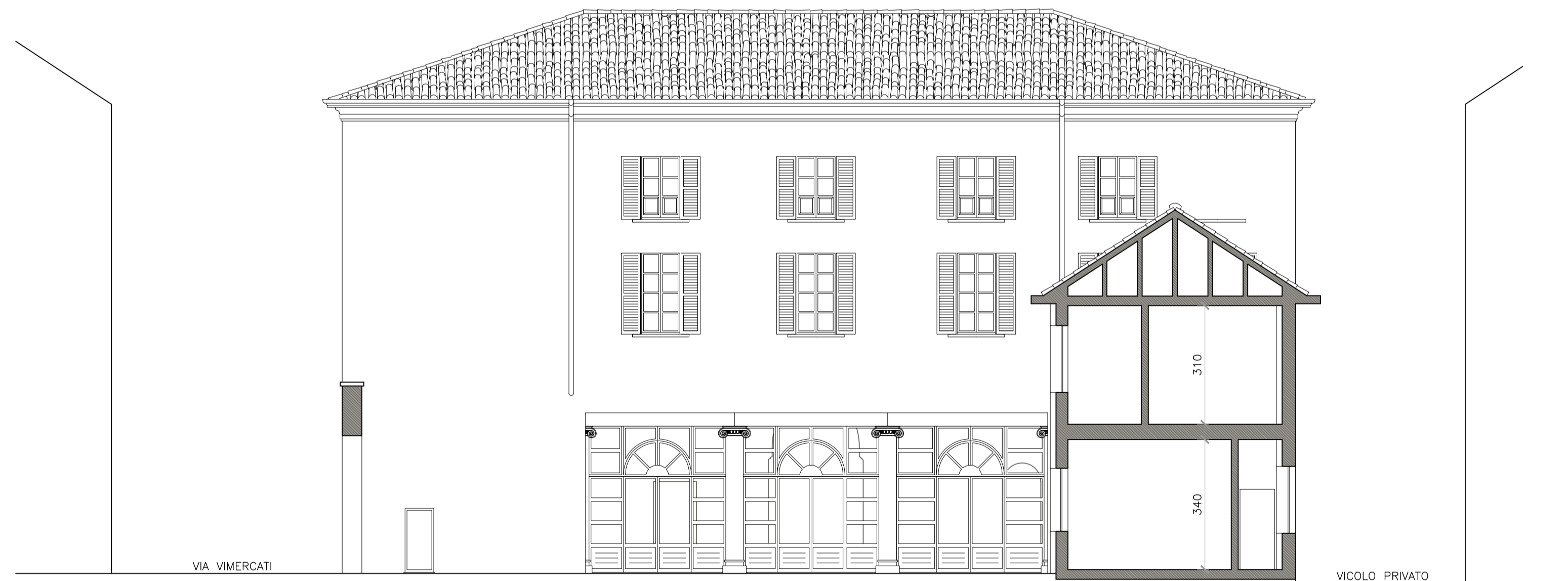
LA PROPRIETÀ
Lecce srl
f.to digitalmente



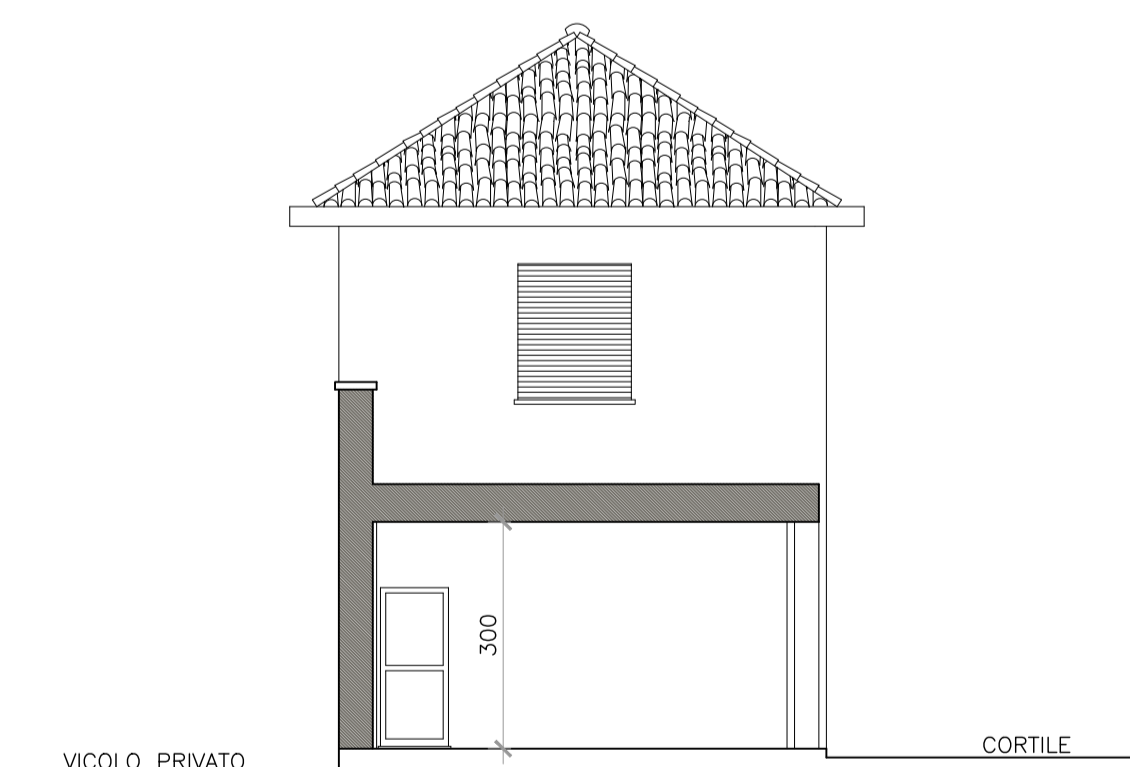
PROSPETTO VIA MATTEOTTI



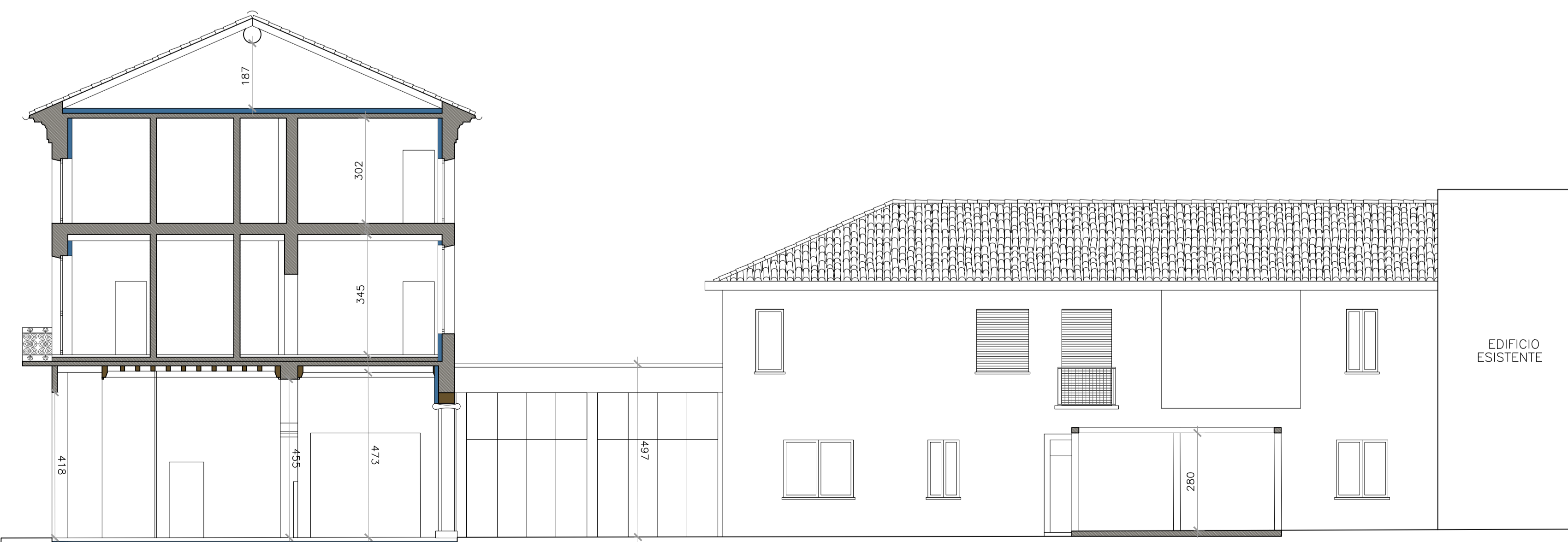
PROSPETTO DAL CORTILE INTERNO



PROSPETTO DAL CORTILE INTERNO



PROSPETTO PALAZZINA



SEZIONE AA