

FACCIAE ESTERNE



FOTO 9 FOTO 10 FOTO 11 FOTO 12 FOTO 13 FOTO 14

CORTILE INTERNO



FOTO 24 FOTO 25

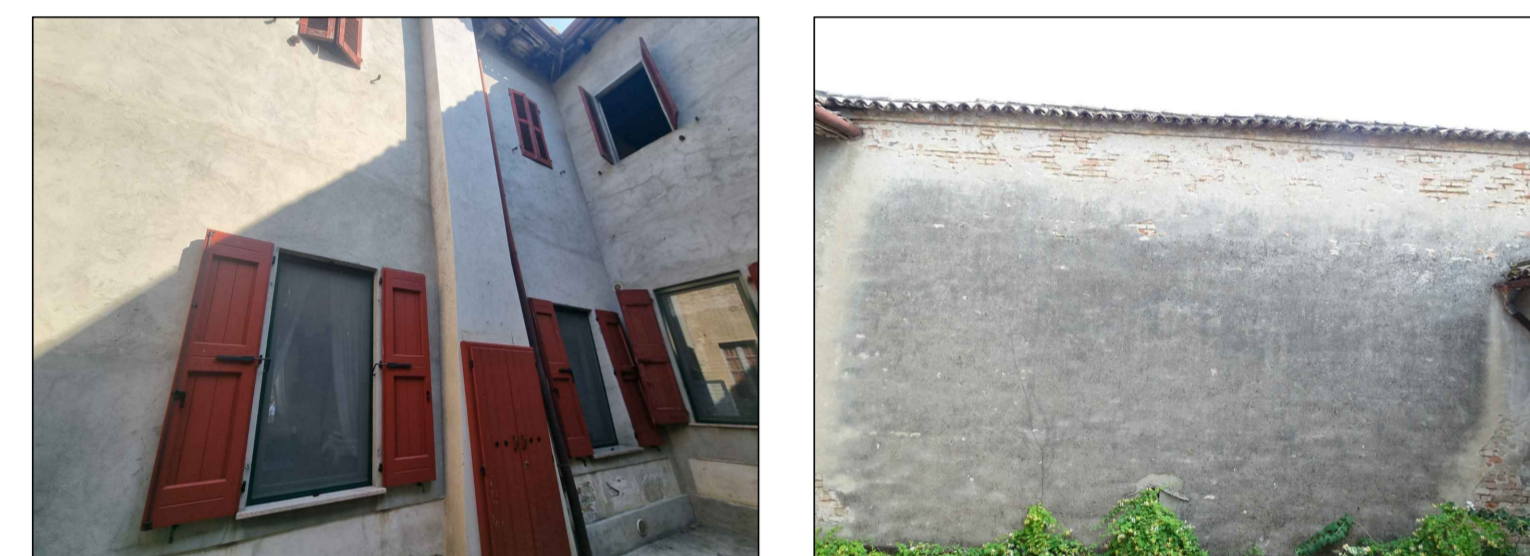


FOTO 26 FOTO 27

CORTILE INTERNO



FOTO 20 FOTO 21

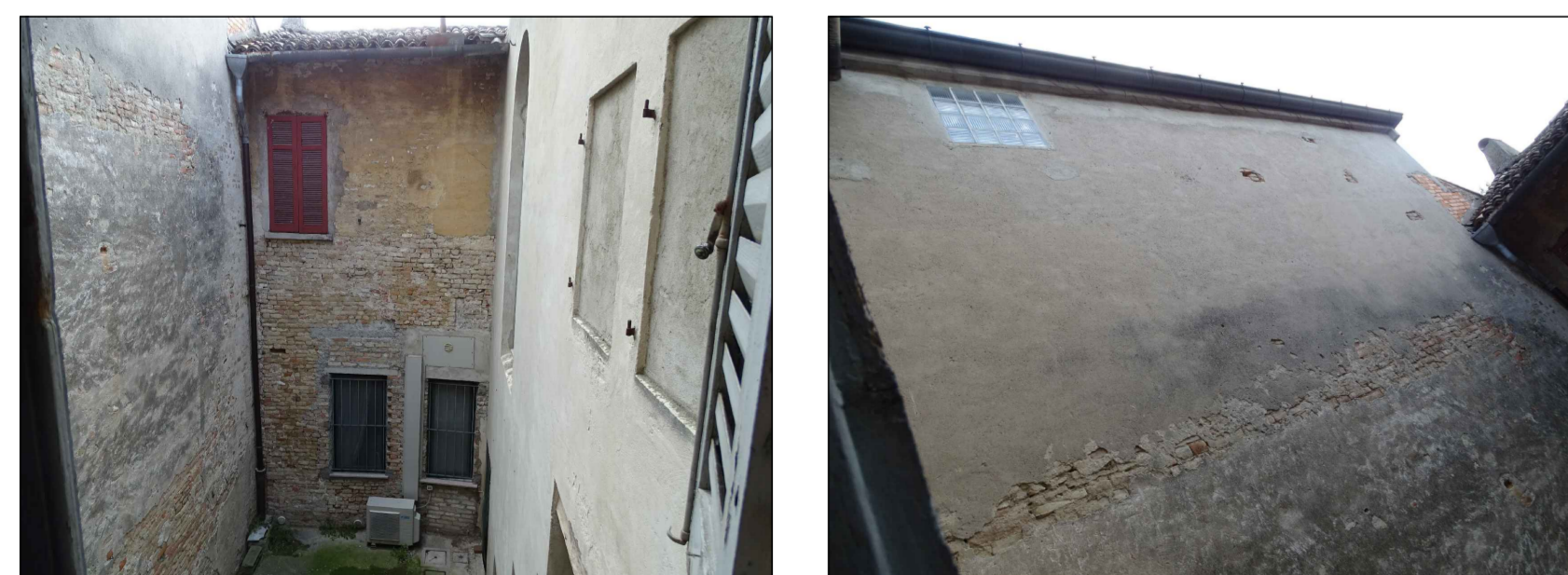
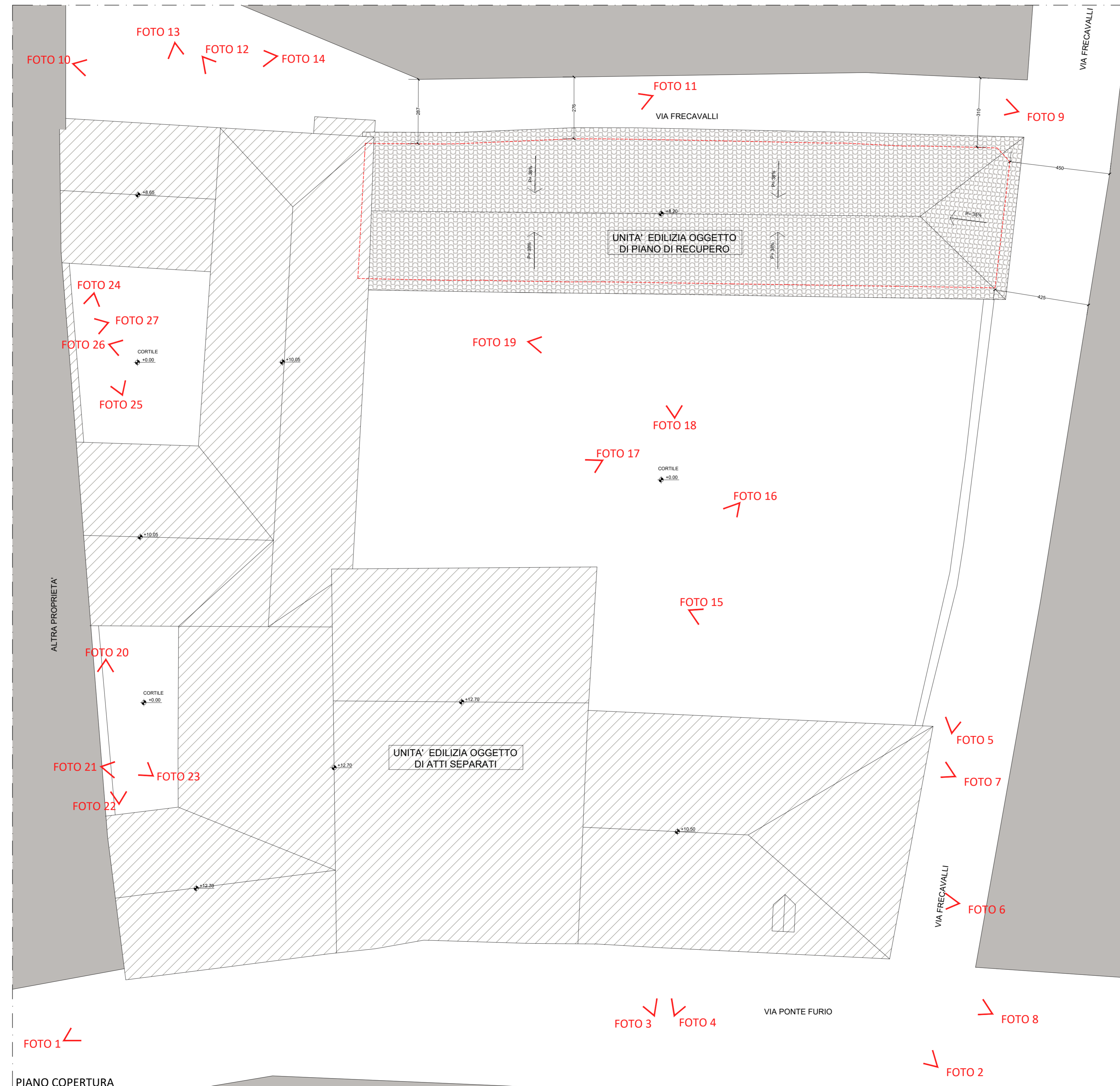


FOTO 22 FOTO 23



PIANO COPERTURA  
STATO DI FATTO

CORTILE INTERNO

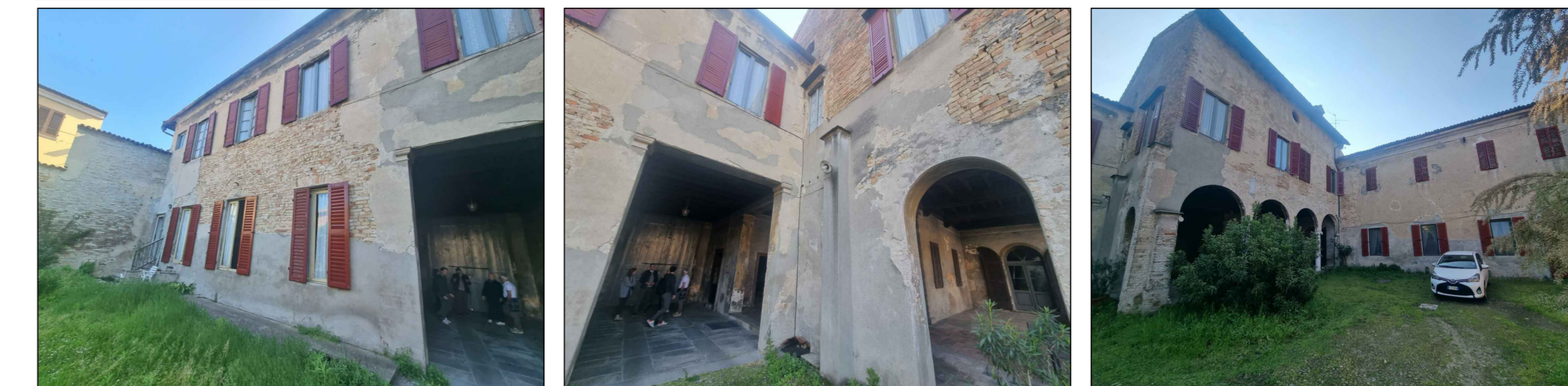


FOTO 15 FOTO 16 FOTO 17



FOTO 18 FOTO 19

FACCIAE ESTERNE

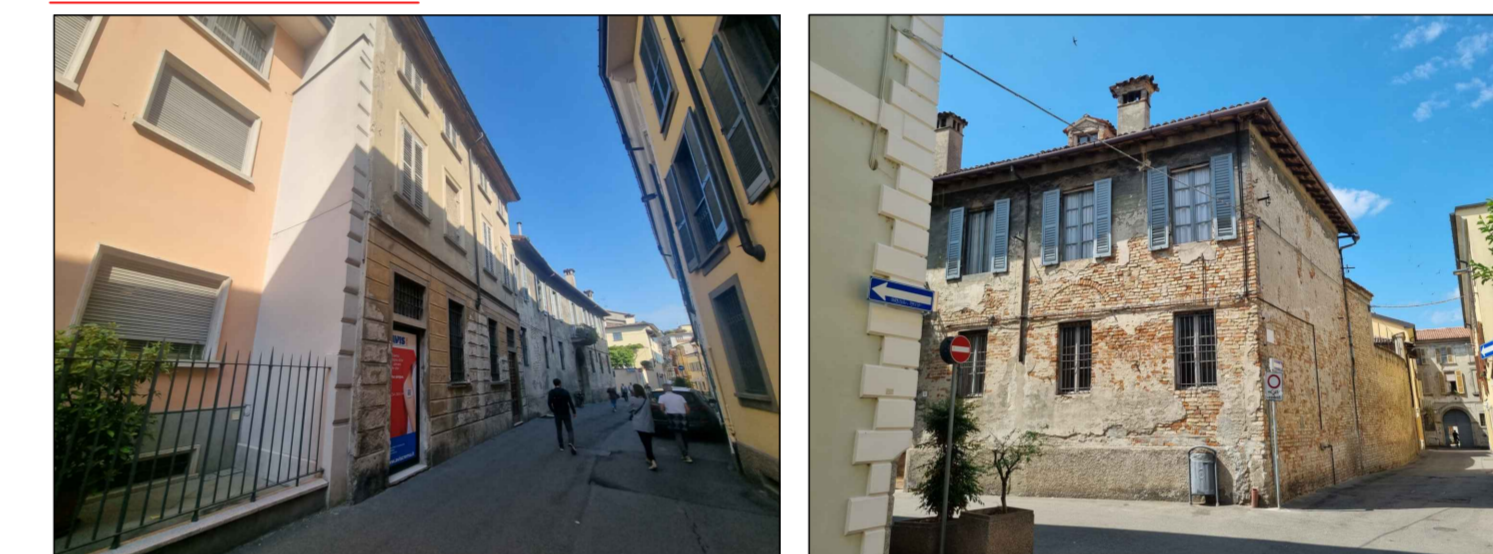


FOTO 1 FOTO 2



FOTO 3 FOTO 4



FOTO 5 FOTO 6

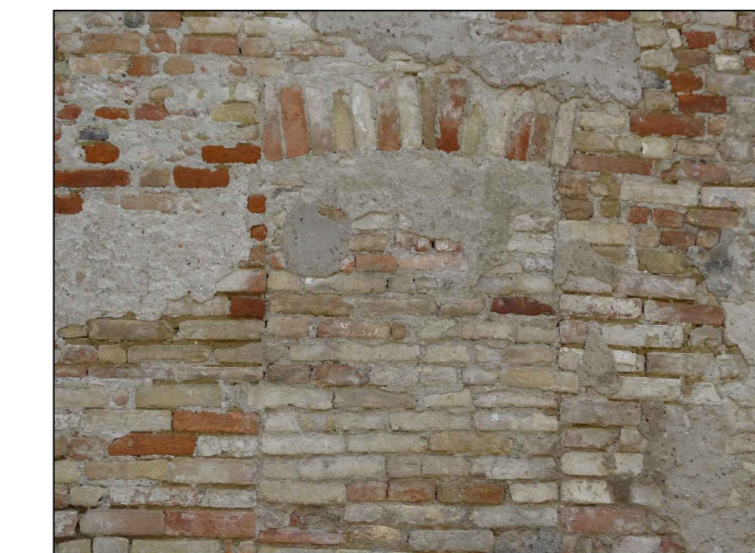
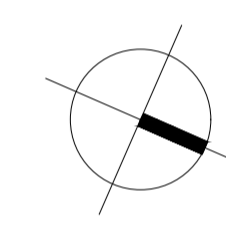


FOTO 7



**R4M**  
ENGINEERING

COMMITTENTI

Sig. GIRARDI ALESSANDRO  
Sig.ra NICOLI IOLE MARIA

IMMOBILE  
VIA PONTE FURIO 11, CREMA

RICHIESTA APPROVAZIONE PIANO ATTUATIVO

REV.	DATA	OGGETTO DI REVISIONE	PROG.	CONT.	VERIF.	APPR.
-	24/08/2023	PRIMA EMISSIONE	SC	SC	ADB	ADB

OGGETTO

PIANTA COPERTURA  
RILIEVO FOTOGRAFICO STATO DI FATTO

COMMESSA:  
IT23040

FILE:  
PR-OV-A02L2\_fto

SCALA:  
1:100

TAVOLA

**PED-0V**  
**A02A**